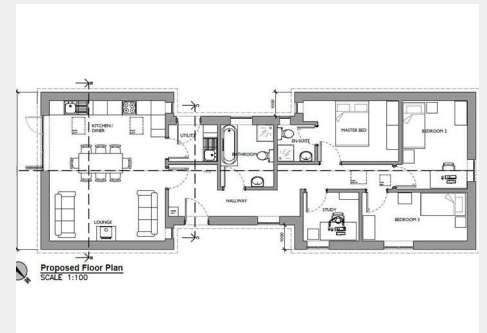
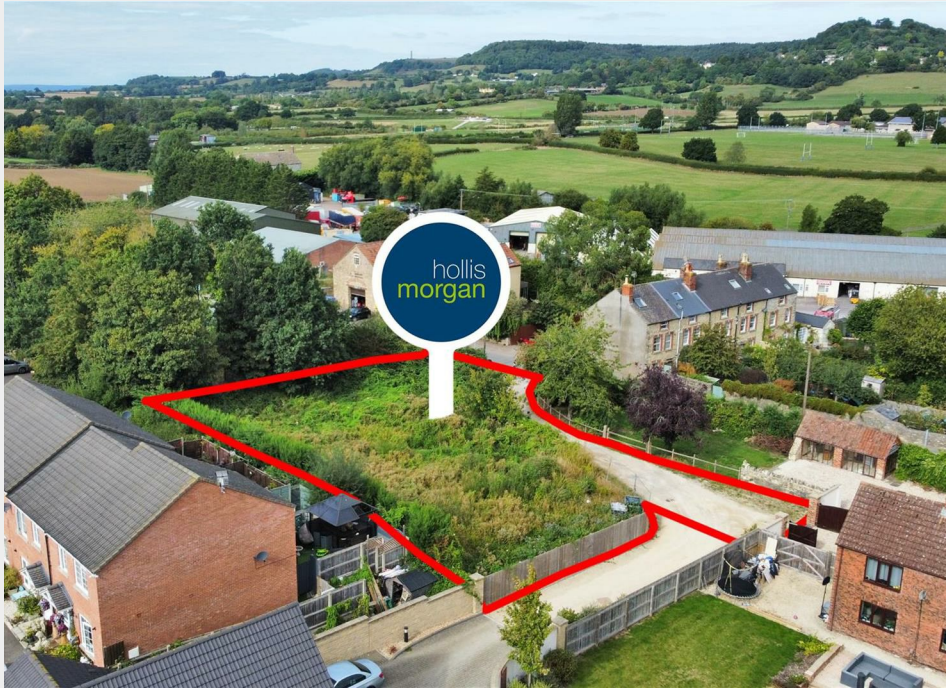


# Plot @ NW Middleyard Farm, Charfield Road, Kingswood, Sold @ Auction £170,000



- FOR SALE BY ONLINE AUCTION
- WEDNESDAY 15TH MAY 2024
- VIDEO TOUR NOW ONLINE
- EXTERNAL VIEWINGS AT ALL TIMES
- LEGAL PACK COMPLETE
- SOLD @ MAY ONLINE AUCTION
- FREEHOLD BUILDING PLOT
- PLANNING GRANTED
- DETACHED 4 BED BUNGALOW
- EXTENDED 8 WEEK COMPLETION

Hollis Morgan – MAY LIVE ONLINE AUCTION - A Freehold BUILDING PLOT ( 0.18 acres ) with PLANNING GRANTED to erect a DETACHED BUNGALOW ( 1329 Sq Ft ) with mature GARDEN and PARKING.

# Plot @ NW Middleyard Farm, Charfield Road, Kingswood, Wotton-Under-Edge, GL12 8SL

## Accommodation

### FOR SALE BY LIVE ONLINE AUCTION

\*\*\* SOLD @ MAY ONLINE AUCTION \*\*\*

GUIDE PRICE £160,000 +++  
SOLD @ £170,000

ADDRESS | Plot @ NW Middleyard Farm, Charfield Road, Kingswood, Gloucestershire GL12 8SL

Lot Number 23

The Live Online Auction is on Wednesday 15th May 2024 @ 17:30  
Registration Deadline is on Monday 13th May 2024 @ 16:00

The Auction will be streamed LIVE ONLINE via the Hollis Morgan website & you can chose to bid by telephone, proxy or via your computer. Registration is a simple online process – please visit the Hollis Morgan auction website and click "REGISTER TO BID"

### THE PROPERTY

A mature Freehold parcel of land circa 0.18 Acres set back from the road in this popular village.  
Sold with vacant possession.

### LOCATION

The semi-rural village of Kingswood is located approximately 1.2 miles South West of the market town Wotton under Edge, 2.6 miles from the village of Wickwar and 6.5 miles from the bustling market town of Chipping Sodbury. It allows ideal access to attractive countryside surrounds and the Cotswolds plus it has the benefit of commuting to Bristol via the M5 Junction 14 - approximately 4.4 miles away. The village has a quaint conservation High Street which leads to the local primary school via the historic Abbey Gates, plus a short walk north of the village will take you to the very popular Katharine Lady Berkeley secondary school. In the centre of the village there is the local store, Public House and gymnasium which is situated in the converted chapel.

### THE OPPORTUNITY

PLANNING GRANTED - DETACHED BUNGALOW

Planning has been granted to erect a stunning detached bungalow ( 1329 Sq Ft ) in mature gardens with 3 off street parking spaces.  
We understand the completed property has a value of £450,000 - £500,000

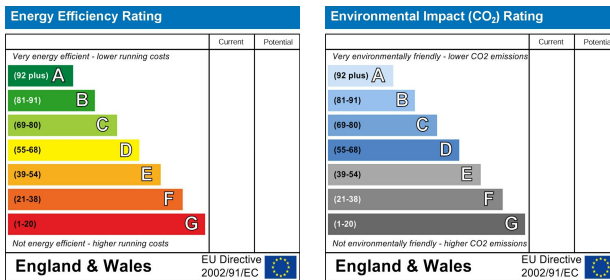
### PROPOSED SCHEDULE OF ACCOMMODATION

Entrance Hall | Open Plan Kitchen / Diner / Living Space with bi fold doors to garden | Utility | Master Bedroom | En Suite | Bedroom 2 | Bedroom 3 | Bedroom 4 / Study | Bathroom

## Floor plan



## EPC Chart



9 Waterloo Street  
Clifton  
Bristol  
BS8 4BT

**hollis  
morgan**

Tel: 0117 973 6565  
Email: post@hollismorgan.co.uk  
www.hollismorgan.co.uk

Hollis Morgan Property Limited, registered in England, registered 7275716.  
Registered address, 5 Upper Belgrave Road, Clifton, Bristol BS8 2XQ

## Auction Property Details Disclaimer

Hollis Morgan endeavour to make our sales details clear, accurate and reliable in line with the Consumer Protection from Unfair Trading Regulations 2008 but they should not be relied on as statements or representations of fact.

Please refer to our website for further details.